

# Shared Crossing



## Site scale -problem & potencial-



### Problem

- Many destinations are around the site, and few people stay here
- The site in living area is far from the four gate, sport sqrea, park area because of the study area, there doesn't seem to be active movement. living area is just a living space

### Potencial

- There are many activities around the site, including night running, square dancing, skateboarding, and other recreational activities
- Various people use this site

### Conclusion 1

People pass by but not stop or stay

## Human scale -problem-



### Problem

- Dormitories do not have enough private and common spaces
- Student living space is small
- Activities such as cooking are banned in dormitories
- Shared space is needed to host these activities

### Conclusion 2

Sharing is needed here

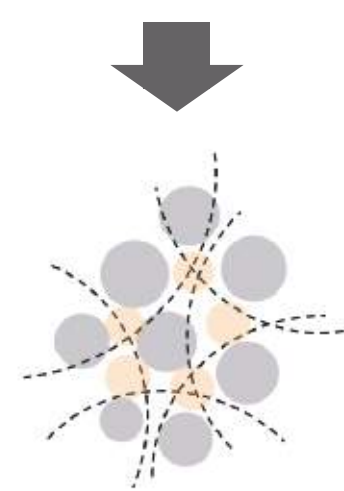
## Concept -shared crossing-

### Conclusion 1

People pass by but not stop or stay

### Conclusion 2

Sharing is needed here



### Shared Crossing

Create shared space and make it a reason for people to stay

## Concept -how to share-

### Who

- Student
- Neighbor
- Teacher
- Community

Share  
X

### What

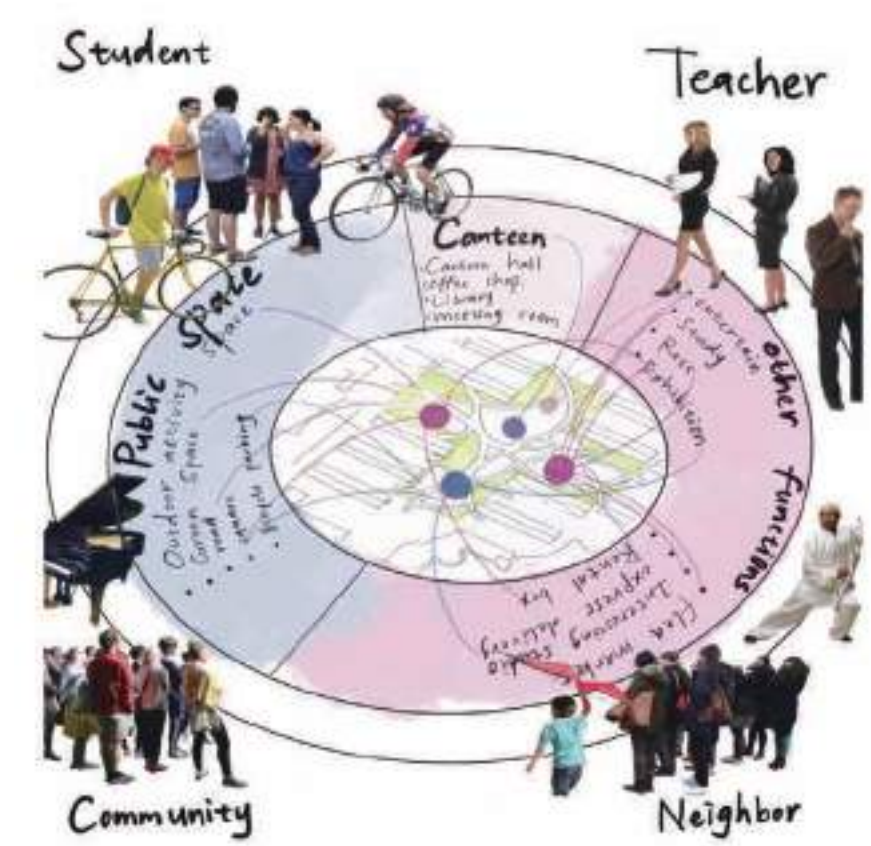
- Dancing
- Learning
- Drinking
- Meeting
- Talking
- Rerading
- Studying
- Teaching
- Chilling
- Cycling

### Where

The shared space is set up on the basis of the division of people's route

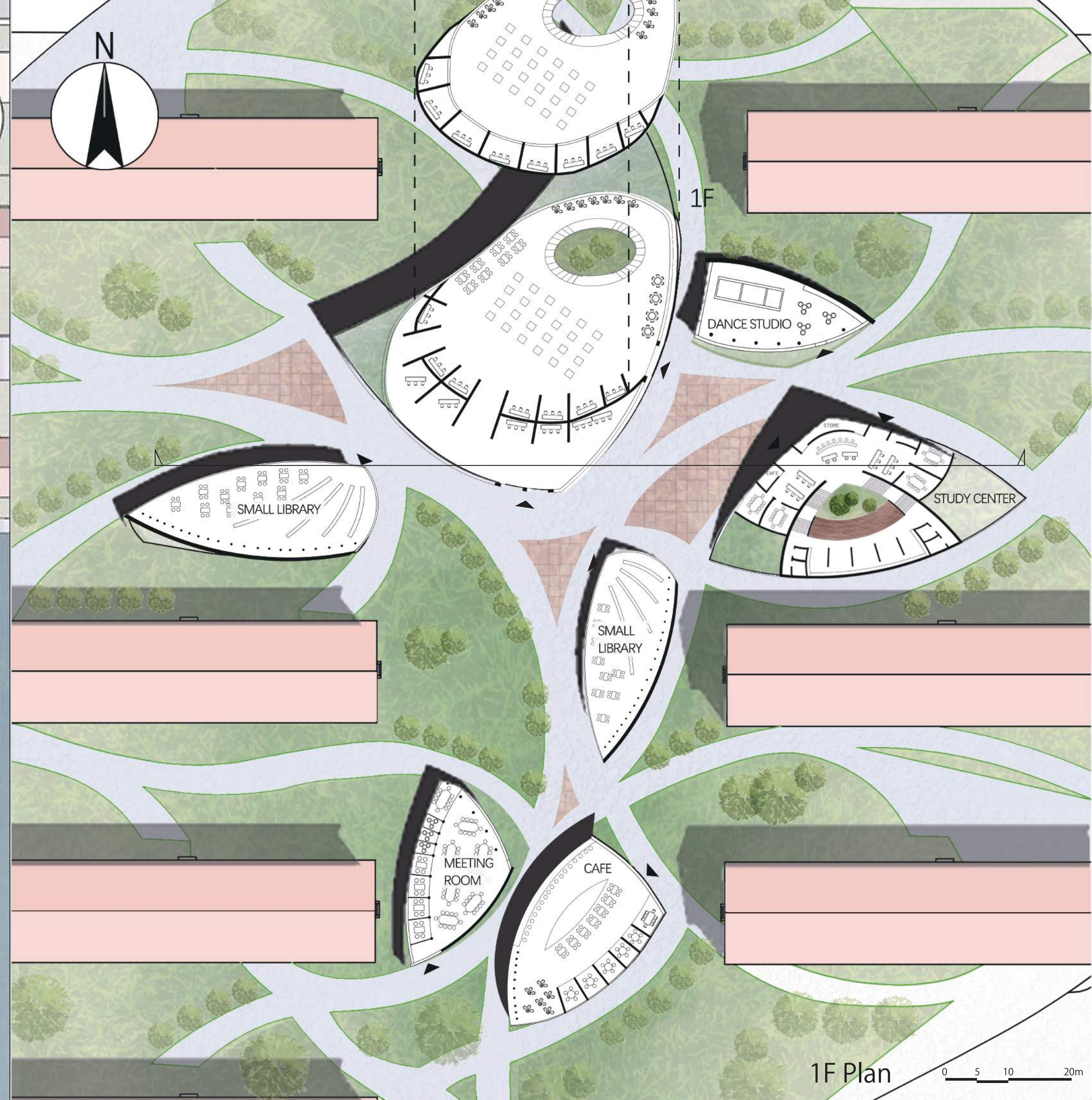
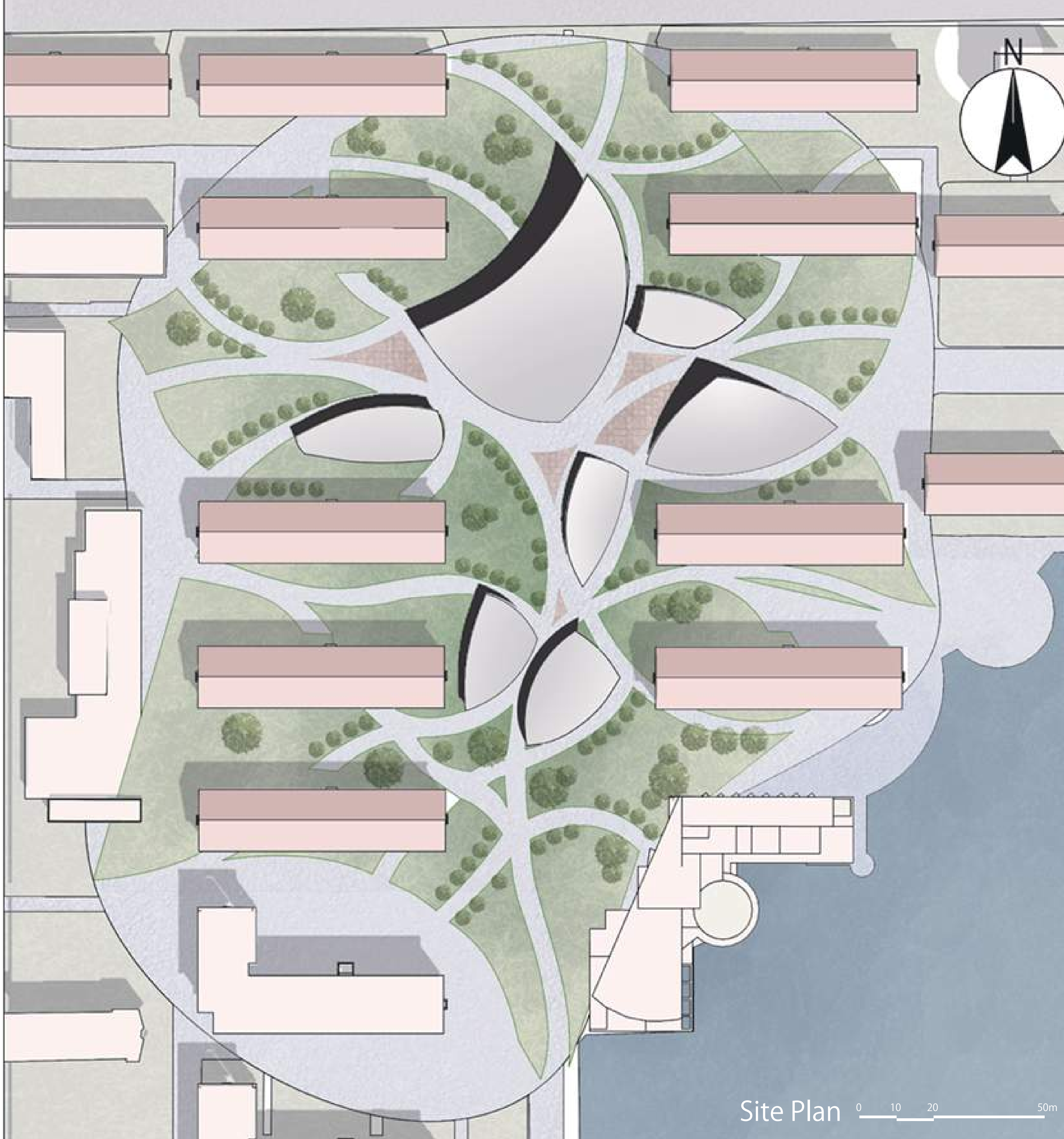
In those area, it can create relationships and lively daily lives

And then students can receive stimulations from another by joining various activities and communities



We have divided the functions into three categories. There are many different activities in these three functions, and the different characteristics of these activities lead to them being shared by different groups of people.





### analysis -Stream of people-

01

02

03

04

05

06

**01-02**  
We extracted the interest points around the site, and obtained the starting and ending points of students' trips as well as some bicycle stops.

**03-05**  
Students eat, entertainment, sports streamline as follows.

**06**  
By superposition analysis of the three streamlines, it can be found that the site is a place where many streamlines can pass through.

### scheme generation -wool algorithm-

Wool algorithm is the optimal result of integrating the minimum number of paths, the shortest length of paths and the accessibility within the site.

site

divided into different functional areas by paths.

Place the sharing spaces in the gap. They are also connected by paths.

### scheme generation -Building block generation-

01

Set starting point

02

Set destination point

03

Get path and Divide the site

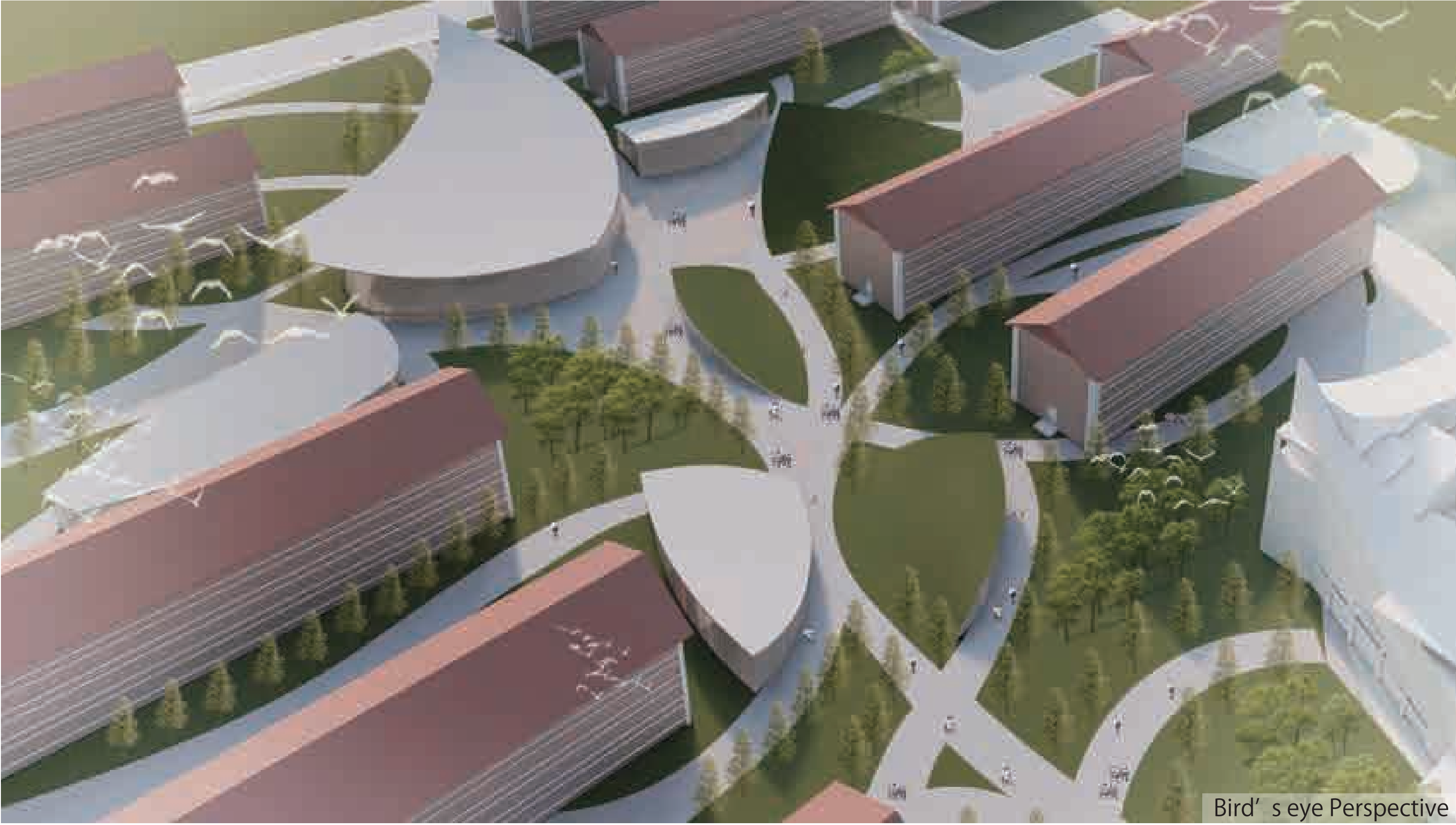
04

Get building

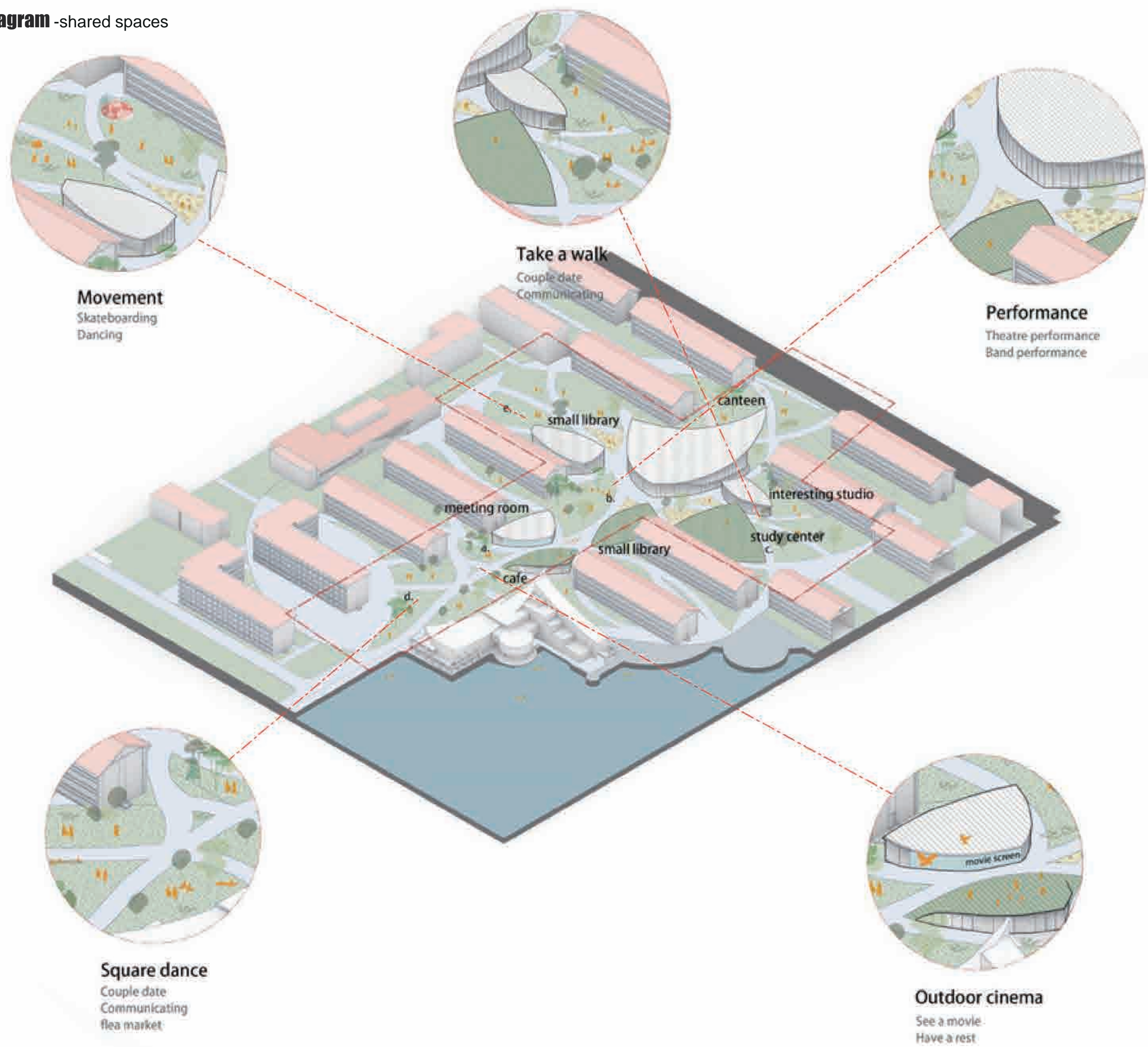
05

Set sharing spaces

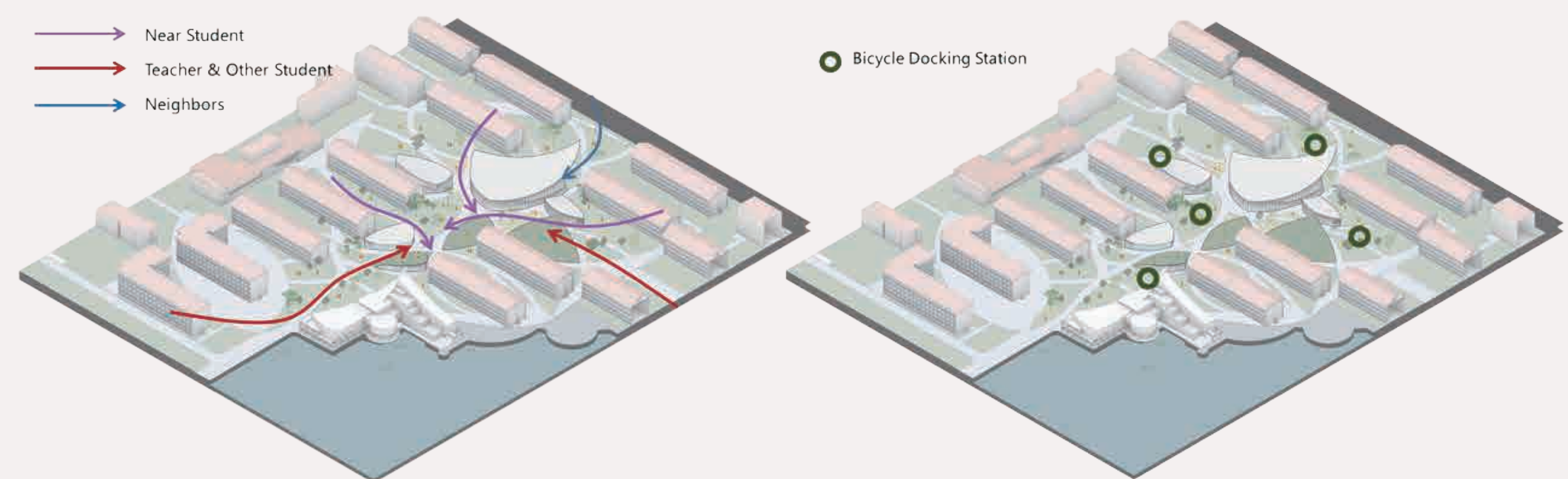




## Design Diagram -shared spaces



## Design Diagram -Site plan







Outdoor Cinema



Shared Space



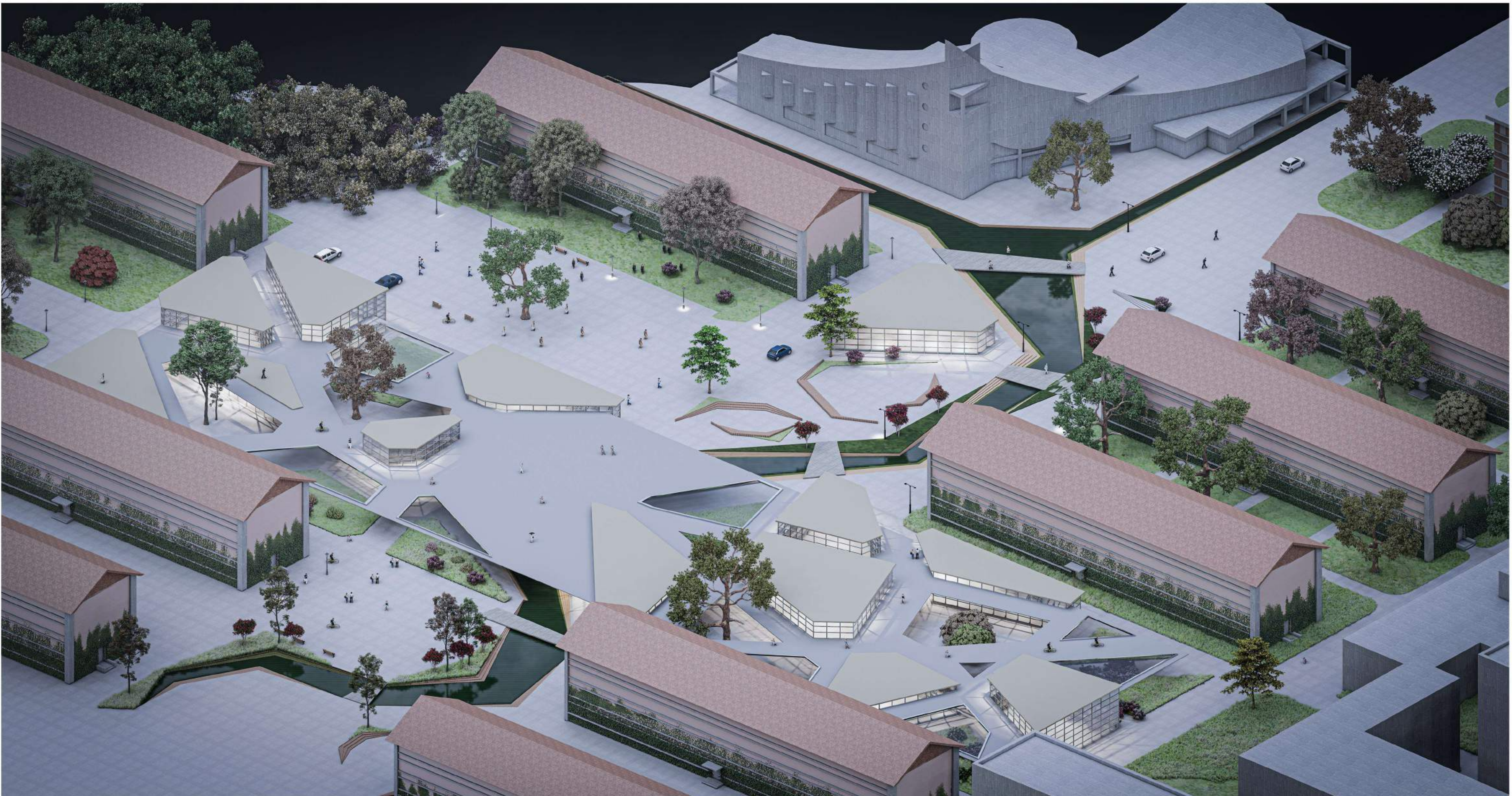
South Elevation Scale=1:300



West Elevation Scale=1:300

0 5 10 20m





# CONNECTION

## WORKWHOP2022

### New public space--Media cafe,A place for your heart in Tianjin University

**Background**  
The theme of the workshop is "New public space – Media Café. A place for your heart in Tianjin University". It will be a public building called Media Café, including an original canteen and a new public facility where provide various possibilities through knowledge or kinds of media. It means that it is not a traditional library, or a learning center where just focuses on knowledge and learning.

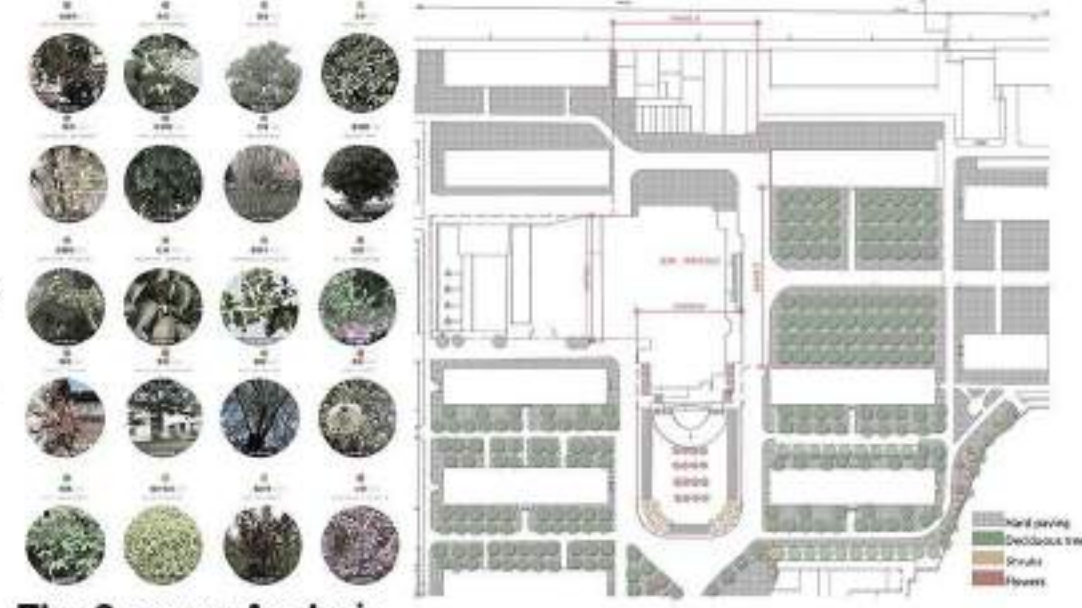
As the campus life in China is quite different from which in Japan. So we have to communicate with each other to let Japanese students know more about Chinese campus life. Chinese university's students leave their parents when they enter a university, they live in the campus. For every Chinese student, campus life almost equals all of his or her youth. The life in university is extremely special not only because those years are in their precious youth periods, but also because almost all the memory of youth is closely connected with campus life. Sometimes, roommates become their best friends in their life, since six or four students live in one room together for four or five years, even seven to ten years.

**Goals**  
Based on the background, we aim to provide a place that can meet different demands of our students in their campus life. As for the site, it is an important traffic hub in Tianjin University. So we try to design a public building which can connect the buildings around from the West to the East and the North to the South. So when students passing by, they maybe are attracted and enter the building to relax, to study, to communicate, or some other things.

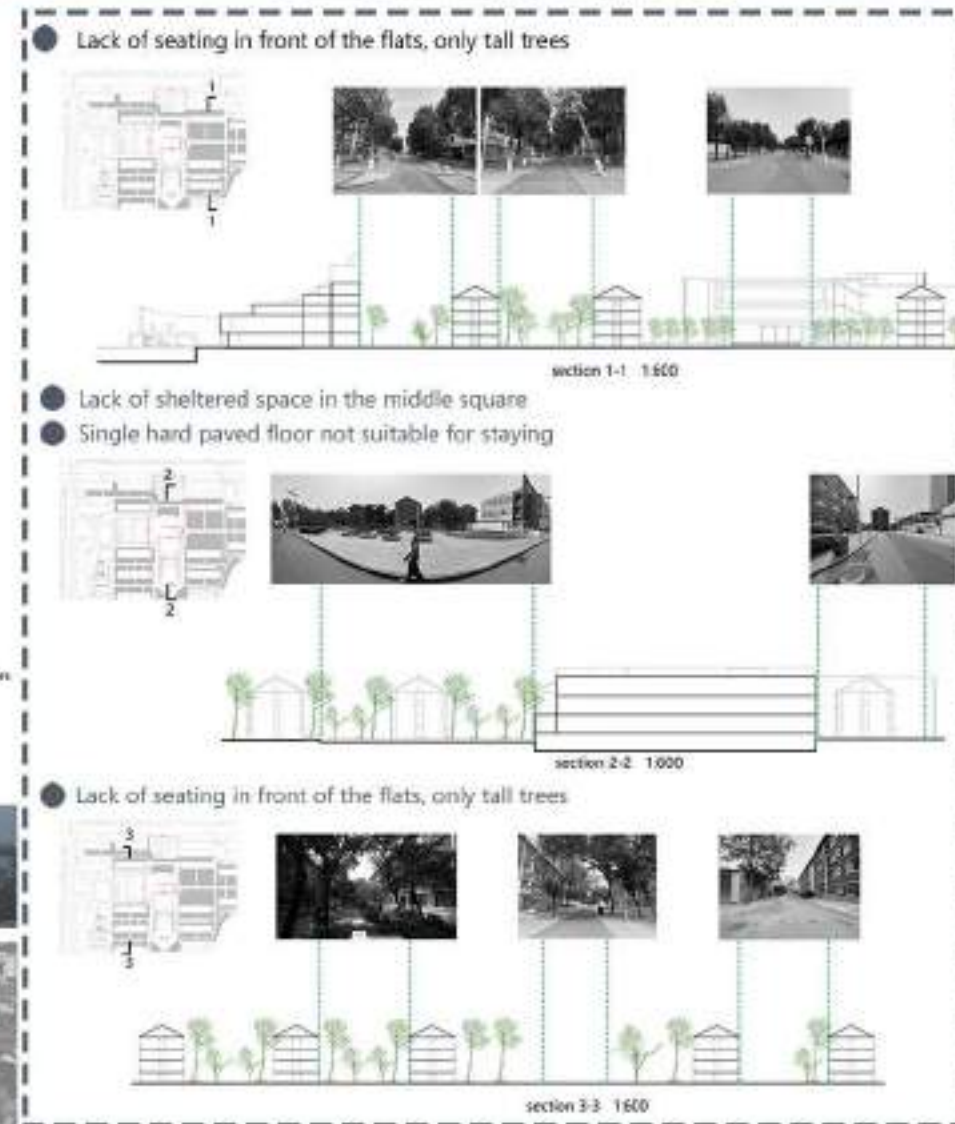


### The Landscape Analysis

The dormitory area is dominated by tall deciduous trees on both sides of the road, while the square area is dominated by shrubs and flowers, and the landscape lacks layers.

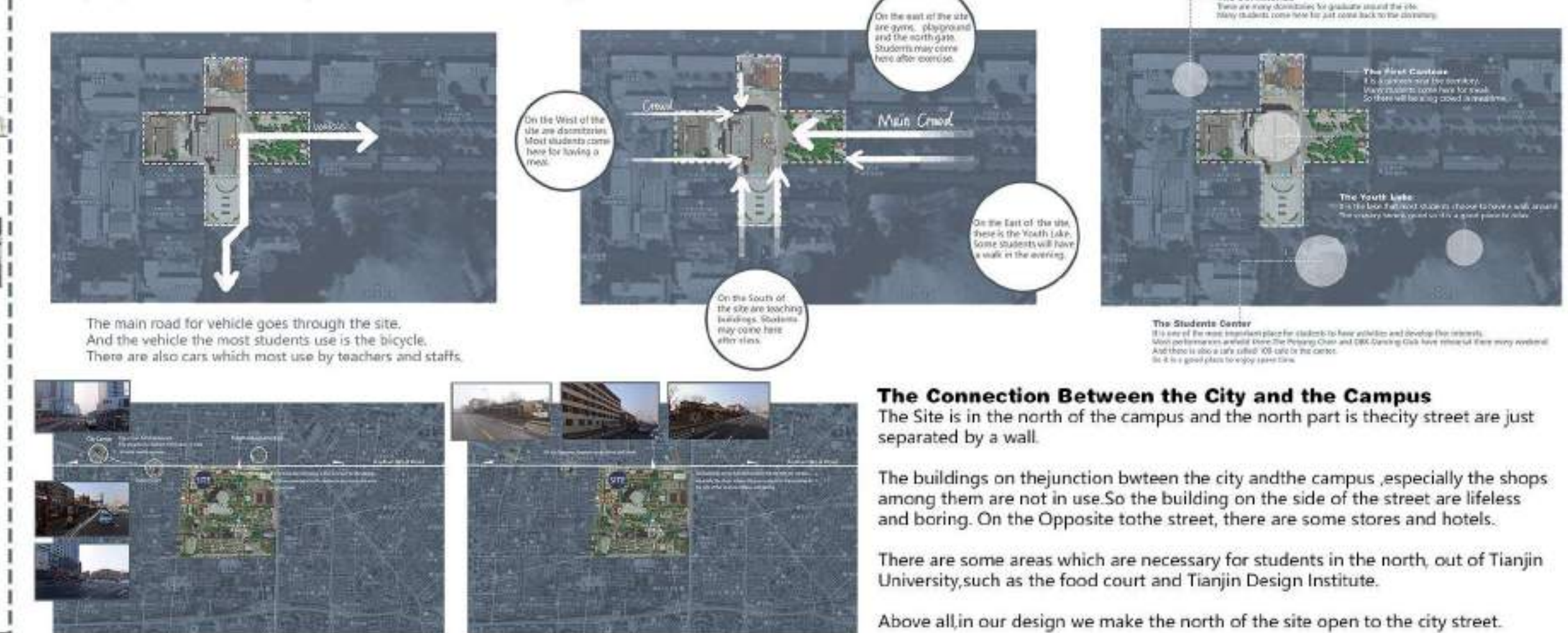


**The Scenery Analysis**  
The lake and greenery are important part of the campus in Tianjin University.  
From the map we can see that there are many trees in the campus. However, in the site there is no trees. And for lake, the people in the site can't see any scenery of the lake because of the Students Center. So we try to make some landscape about the green and the lake to make students feel walking in the nature.



### Traffic and Crowd Analysis

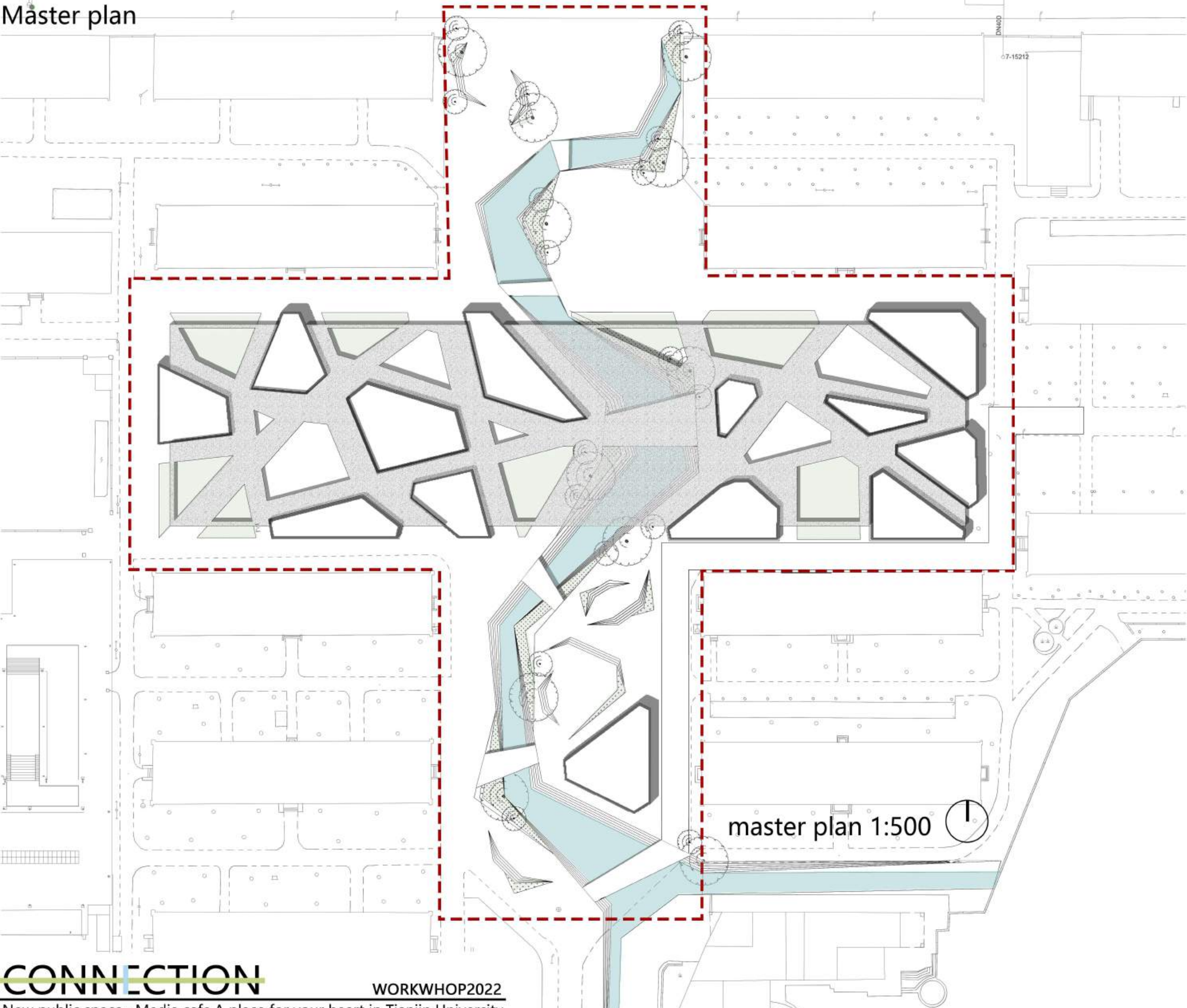
The site is a place that different students will come from different directions after different activities for different aims. So when we analyze the crowd of the site, we try to analyze from two parts: **Where they come from** and **Why they come here**. As for the different kinds of crowdcoming there, we try to provide chances to everyone come here can do something.



**The Connection Between the City and the Campus**  
The Site is in the north of the campus and the north part is the city street are just separated by a wall.  
The buildings on the junction between the city and the campus, especially the shops among them are not in use. So the building on the side of the street are lifeless and boring. On the Opposite to the street, there are some stores and hotels.  
There are some areas which are necessary for students in the north, out of Tianjin University, such as the food court and Tianjin Design Institute.  
Above all, in our design we make the north of the site open to the city street.



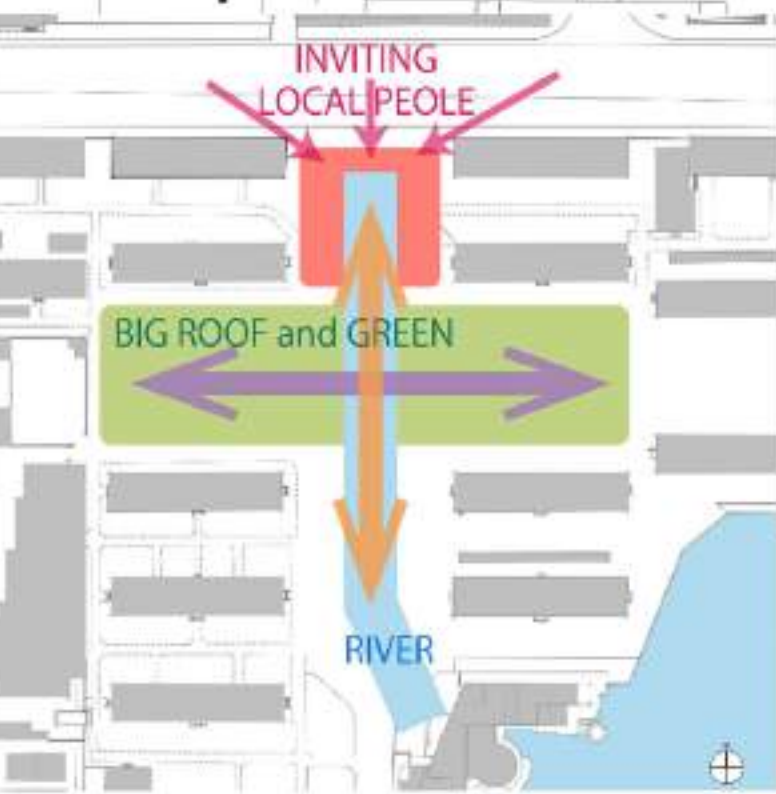
Master plan



CONNECTION

New public space--Media cafe,A place for your heart in Tianjin University

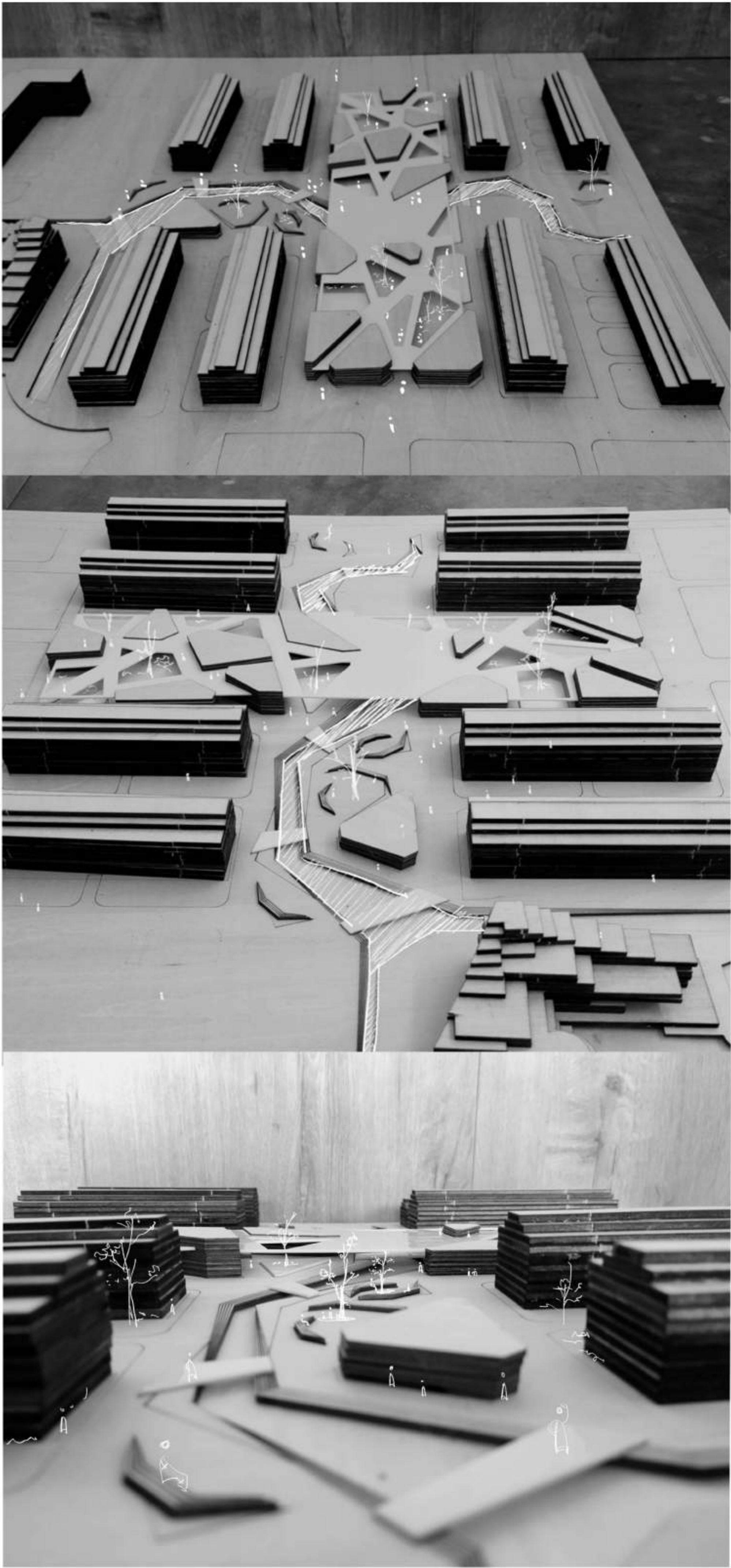
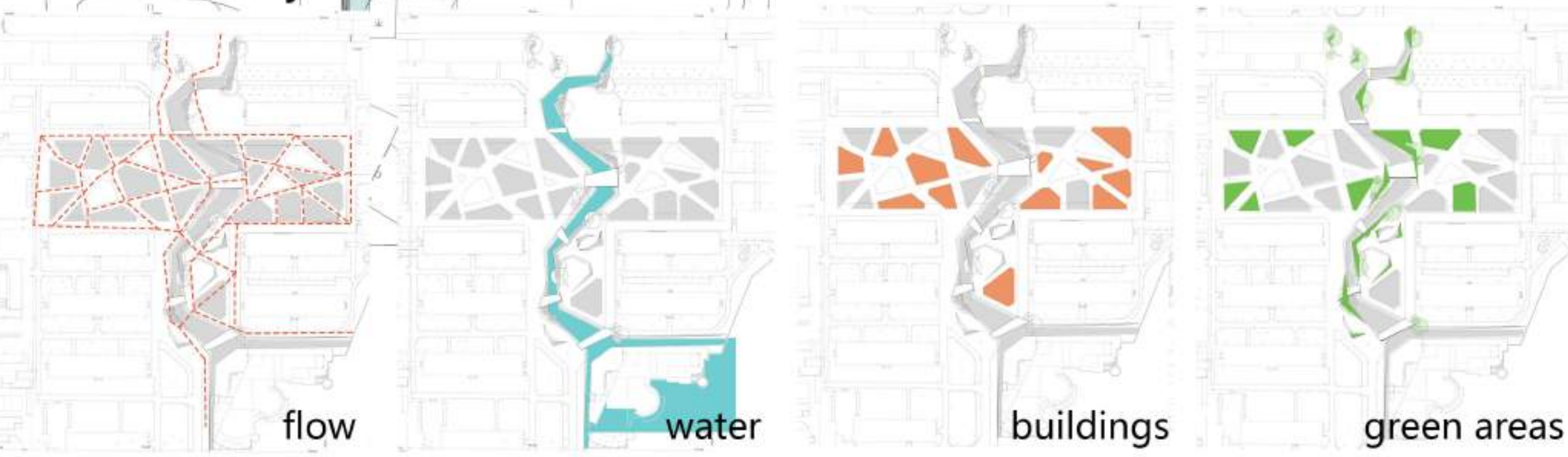
concept



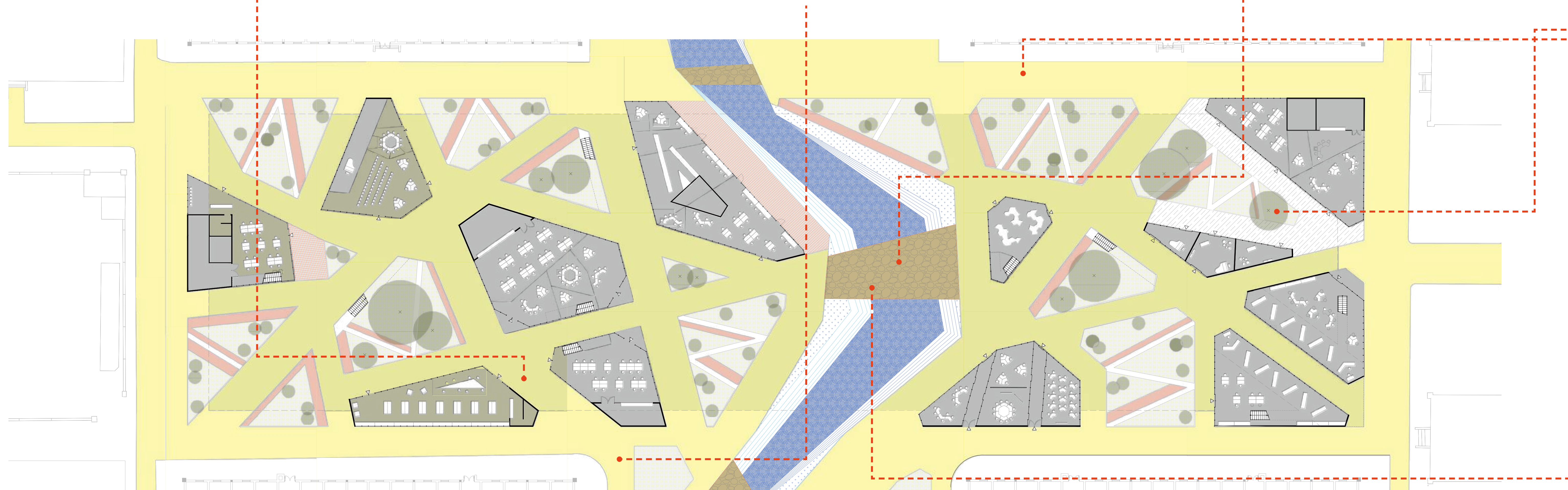
We hope to connect the whole site through water flow in the north-south direction and large roof and greening in the east-west direction.

WORKWHOP2022

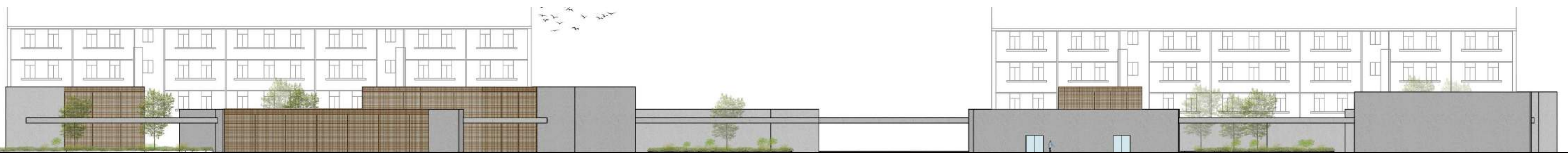
element analysis



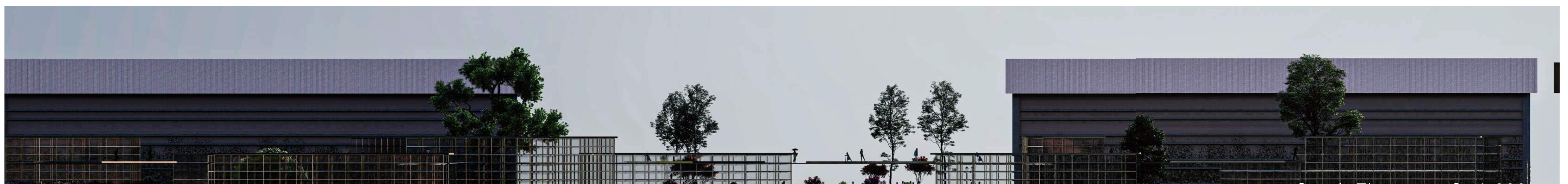




1F Building Plan S=1:300

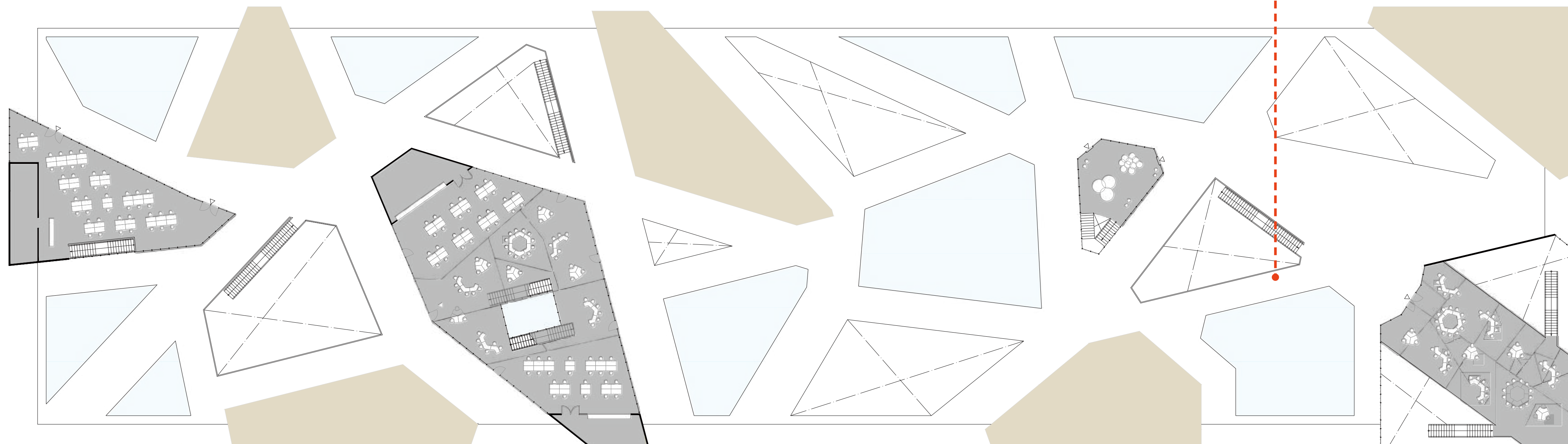


X-X' Section S=1:200



South Elevation S=1:200





2F BuildingPlan S=1:300



Y-Y' Section S=1:200



West Elevation S=1:200







1
Research

Life at Tianjin University

2
Research

Research from different point

- People staying by the lake -

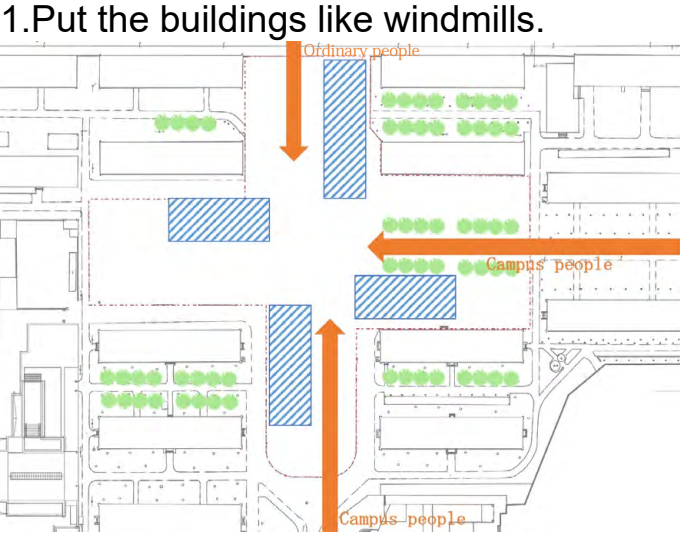
- Too small Dormitory -

Campus Scale: Lack of nature

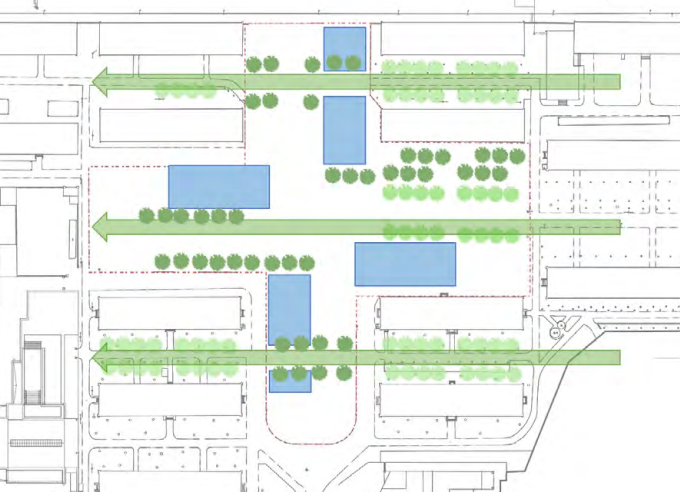
Site Scale: Characteristic of each area

Architecture Scale: No space to stay

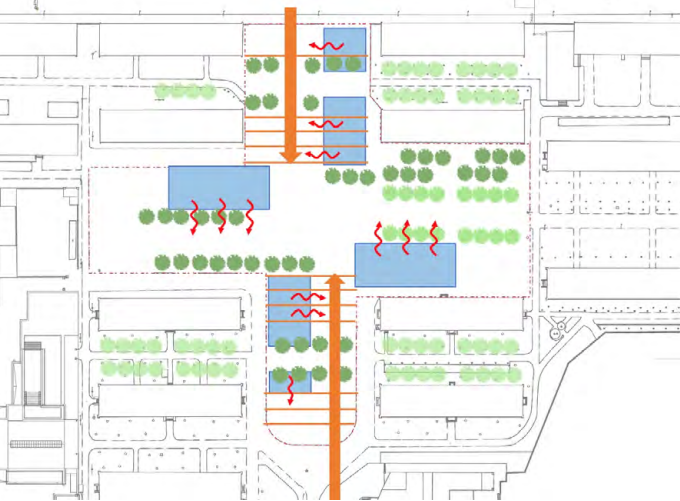




2.Connecting green networks.

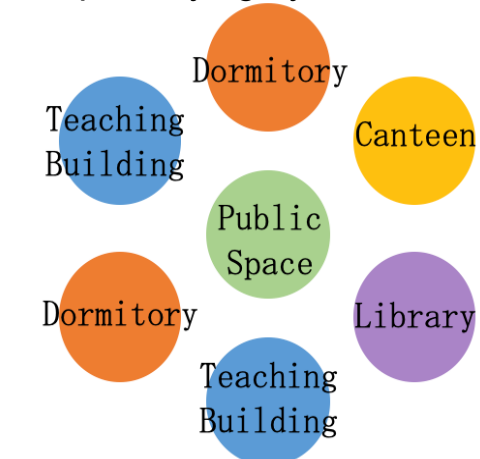


3.Make steps to let people stay

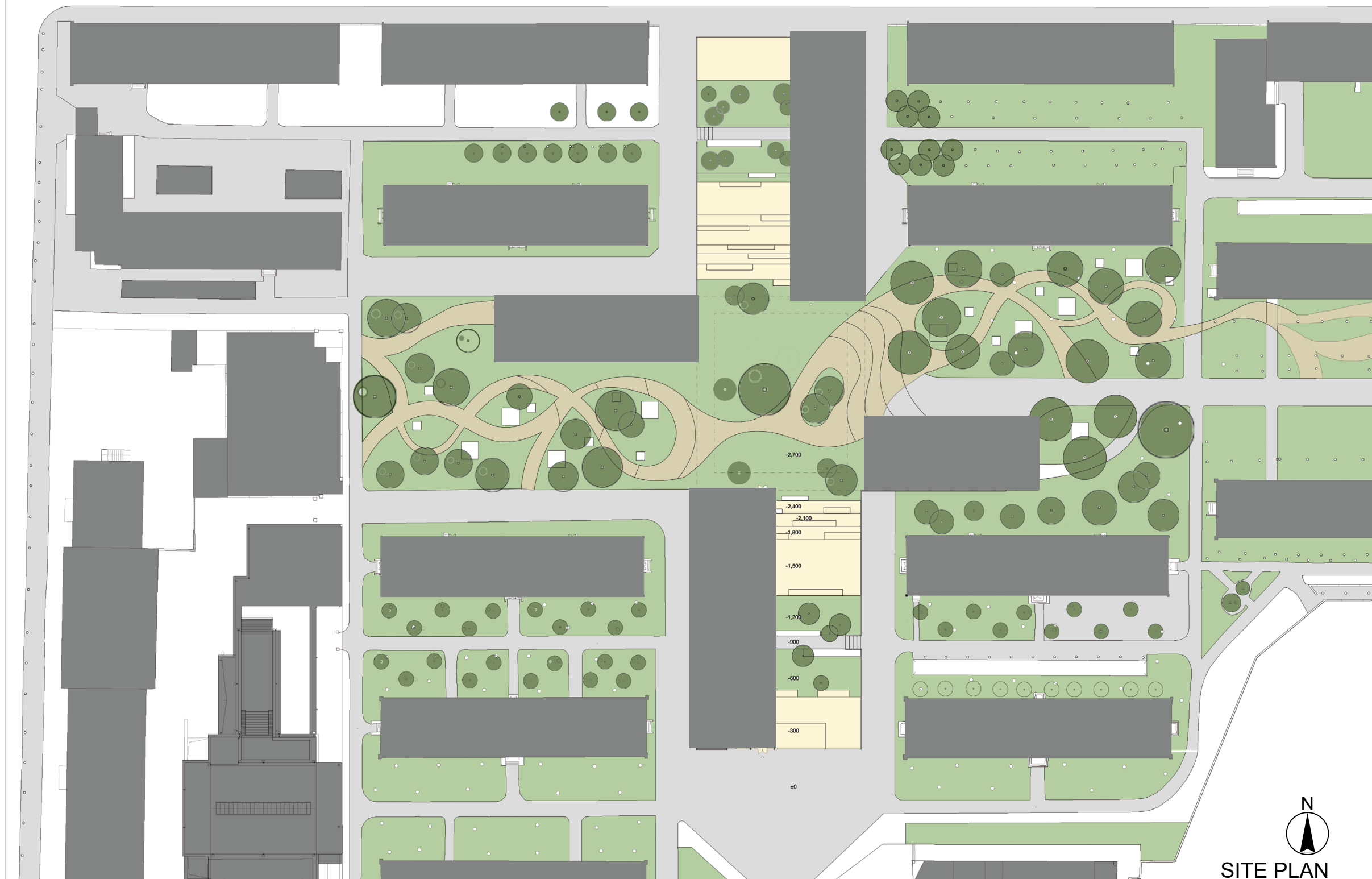


3 Proposal Public Space Connect any other Facility

-People staying by the lake-

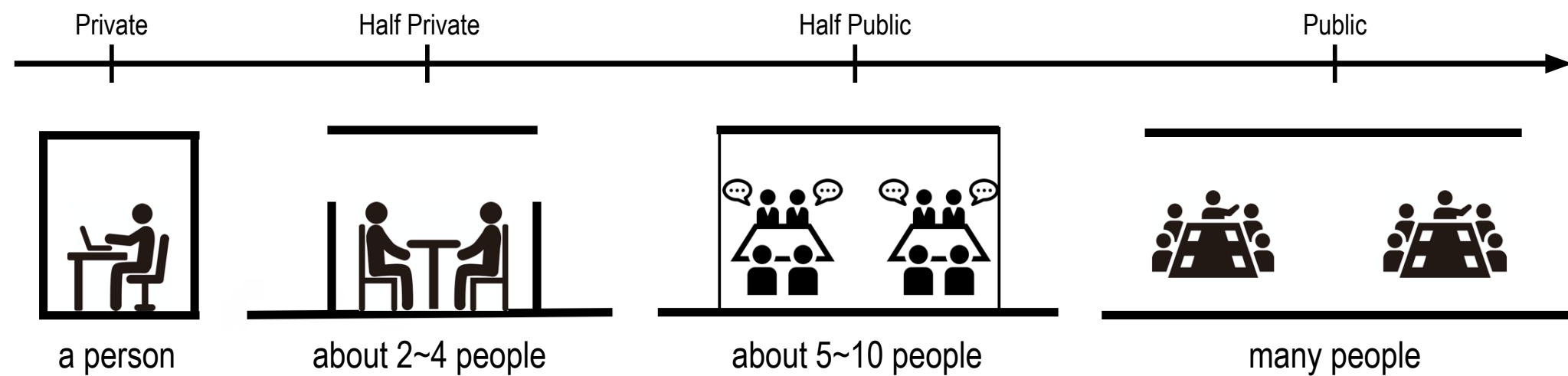


-Too small Dormitory-

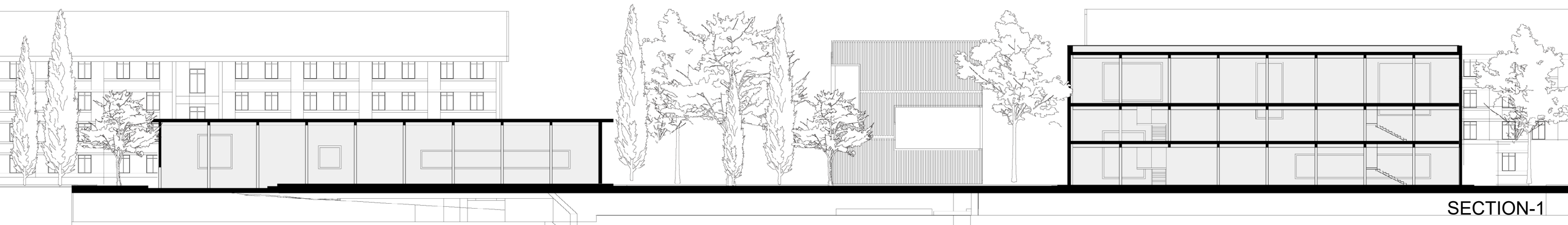
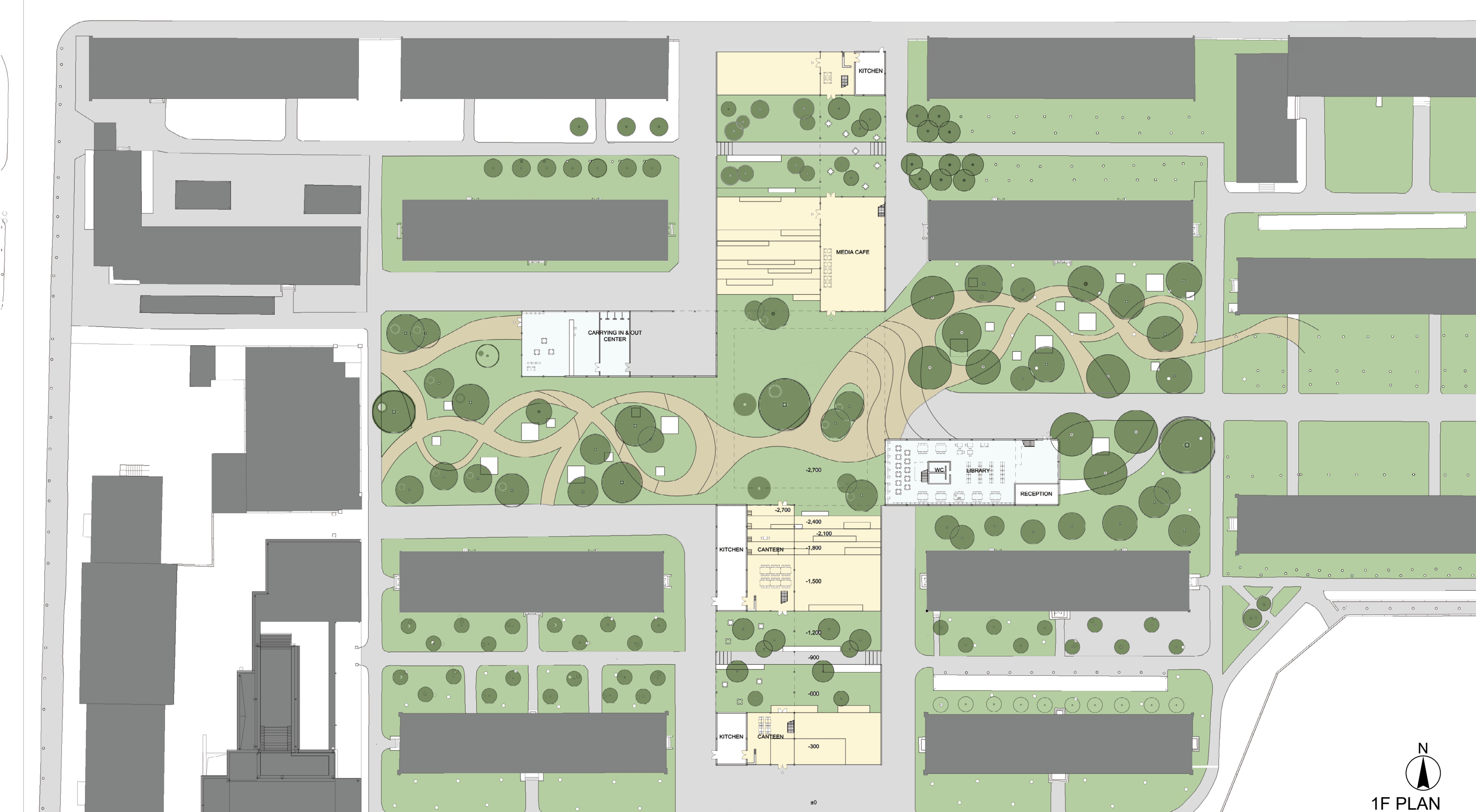


4 Proposal

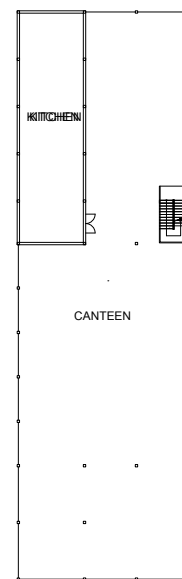
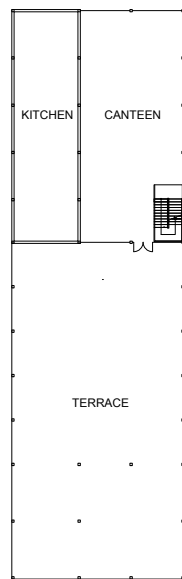
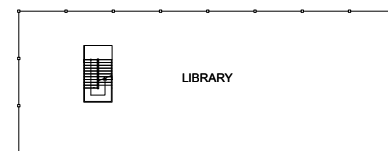
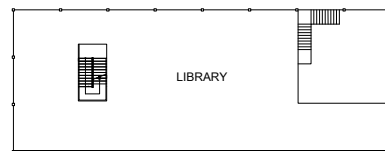
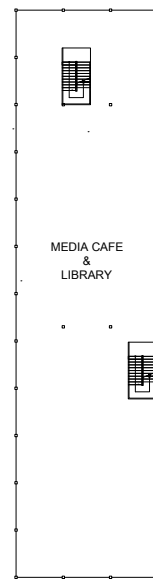
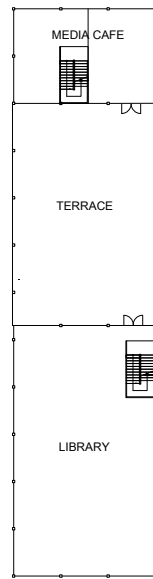
Diverse Space to stay











2F PLAN

3F PLAN



SECTION-2



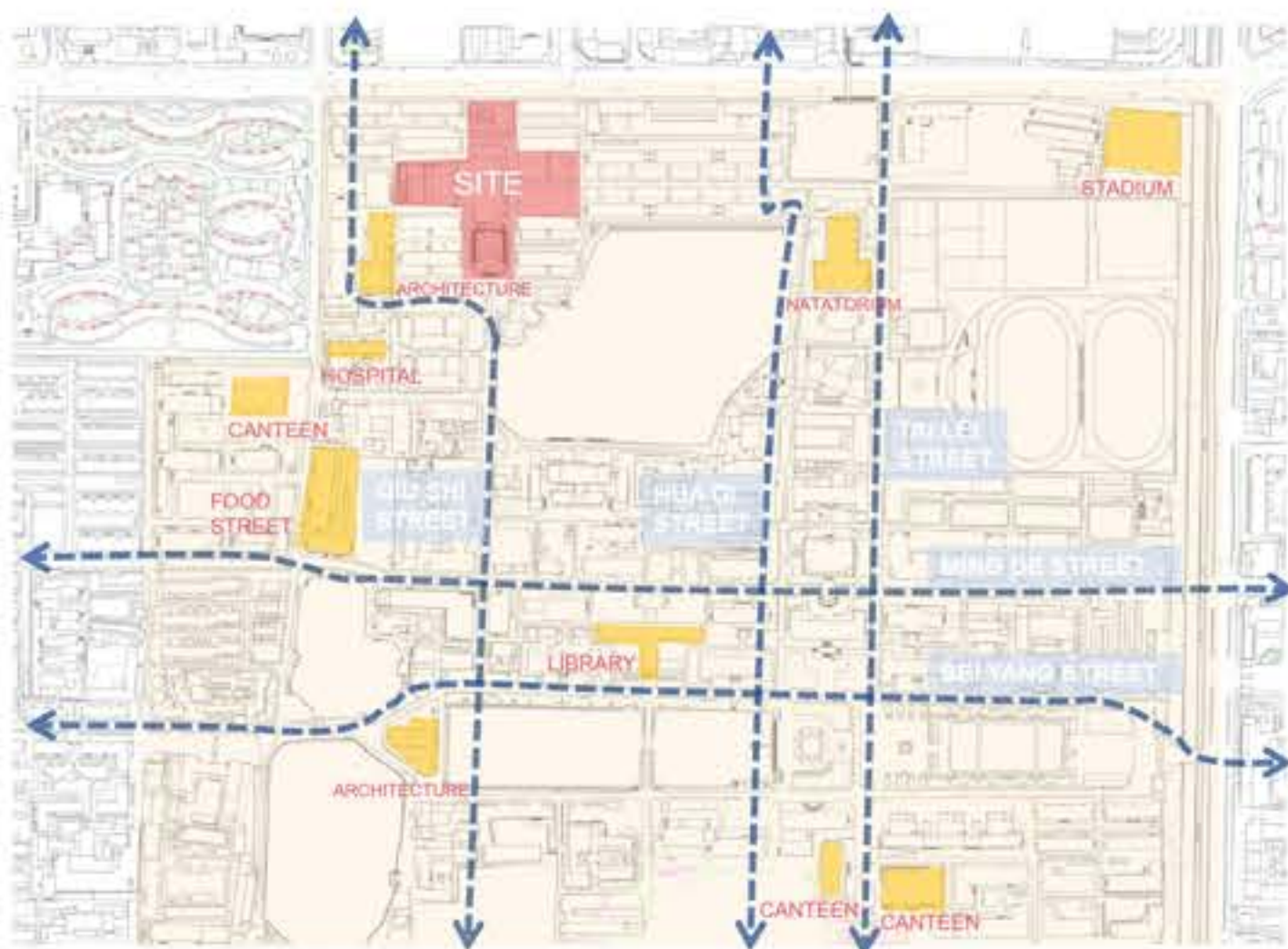
# "knot" Group4

## Internation Workshop 2022

The current facilities on campus cannot meet the daily activities and display needs of various clubs on campus, and at the same time, the campus can provide insufficient entertainment and cultural activities for other students. By providing open activities and exhibition spaces for clubs with display needs, a variety of activities can be joined in the activity area of the media coffee, thereby attracting students who pass through the cafeteria to stay, participate in activities, and get spiritual relaxation. Public space that can not only let students share their activities but also not be

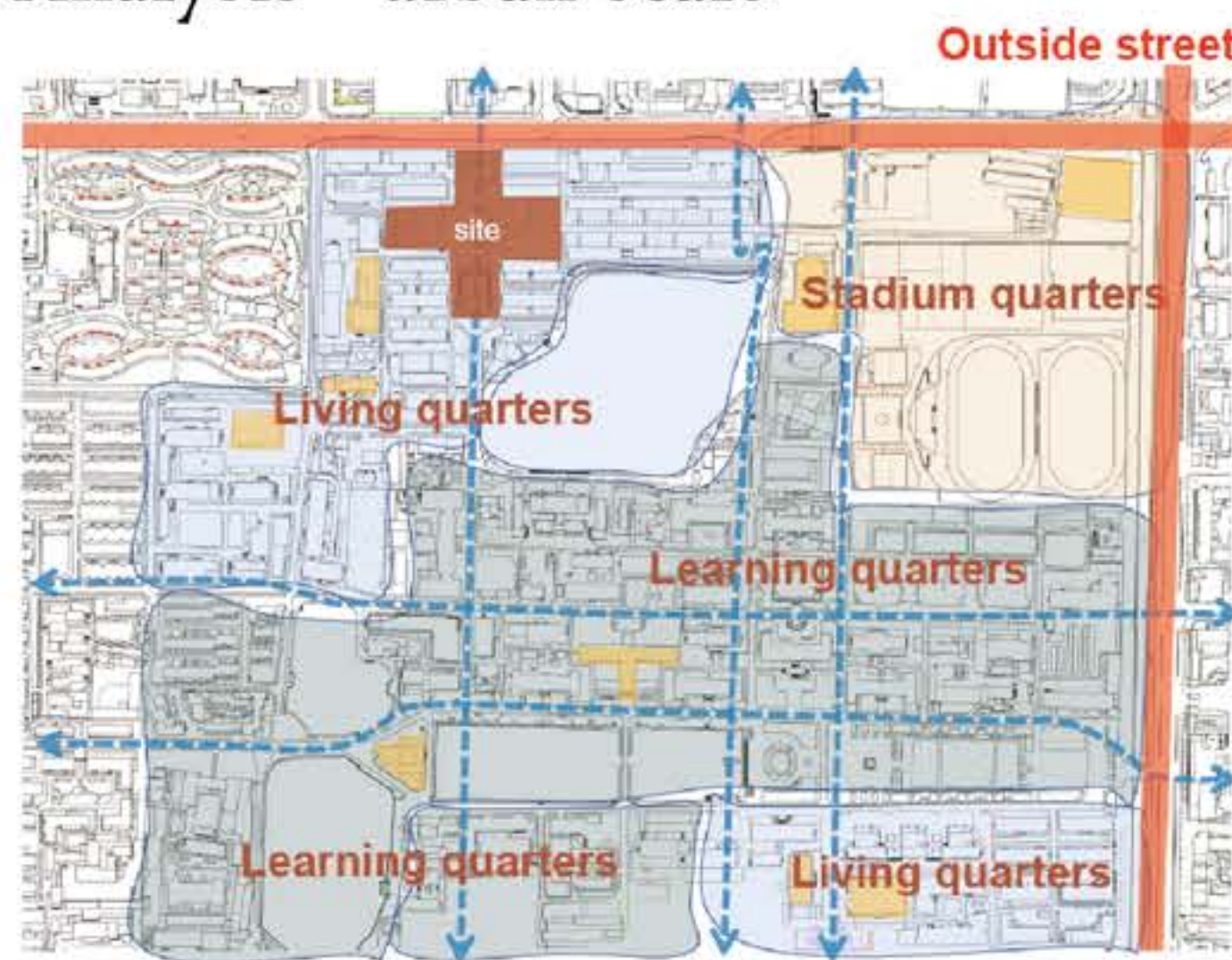


### Analysis –urban scale



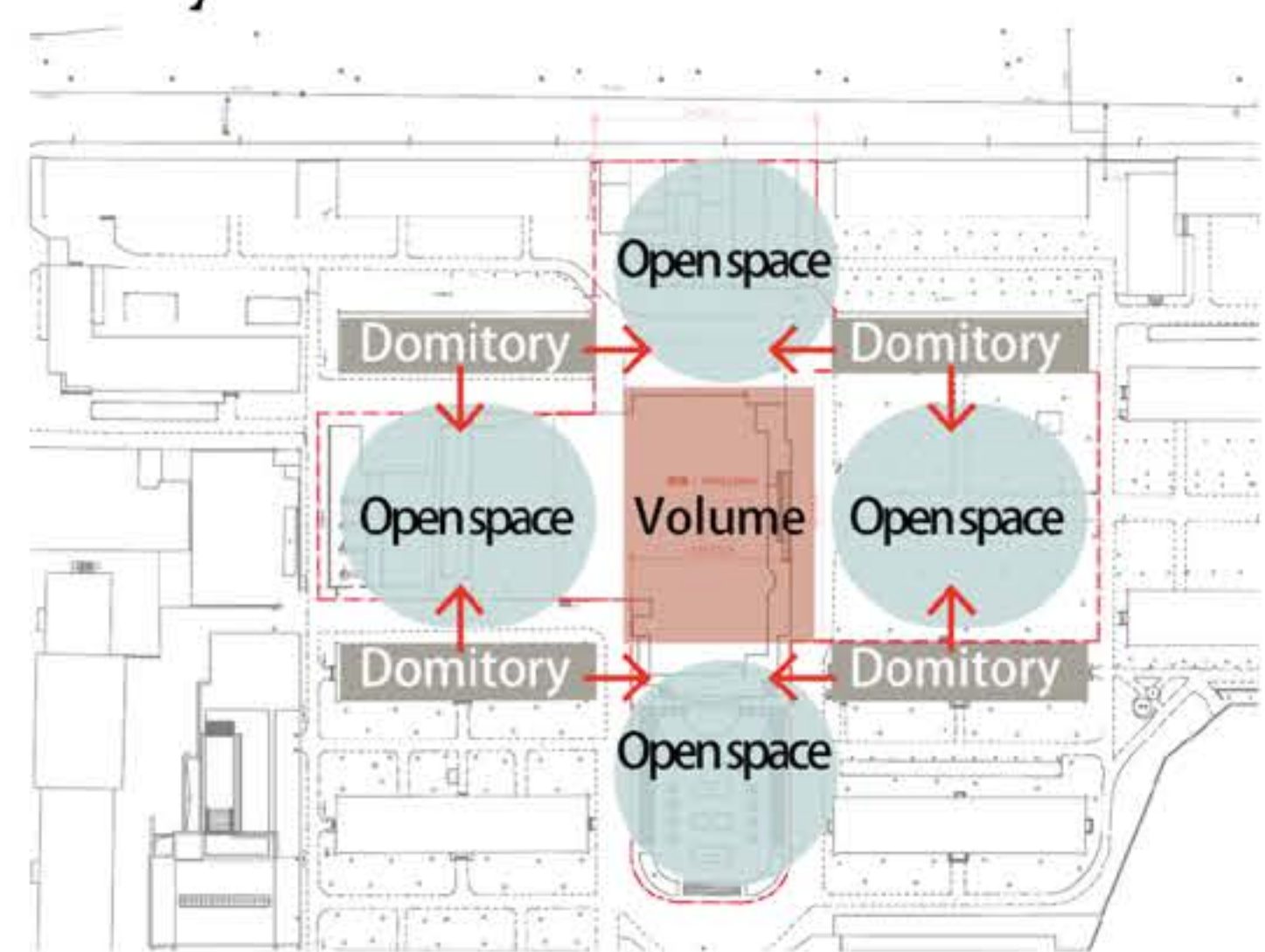
Through the analysis of roads and infrastructure, it can be seen that the base is located, with less trunk roads, and less learning and sports infrastructure.

### Analysis –urban scale



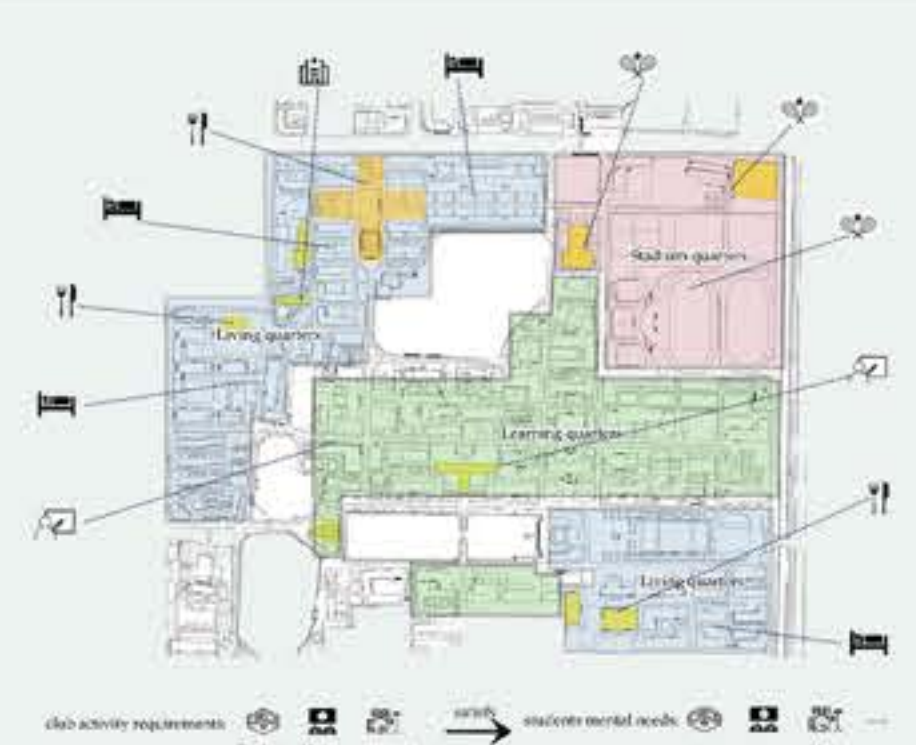
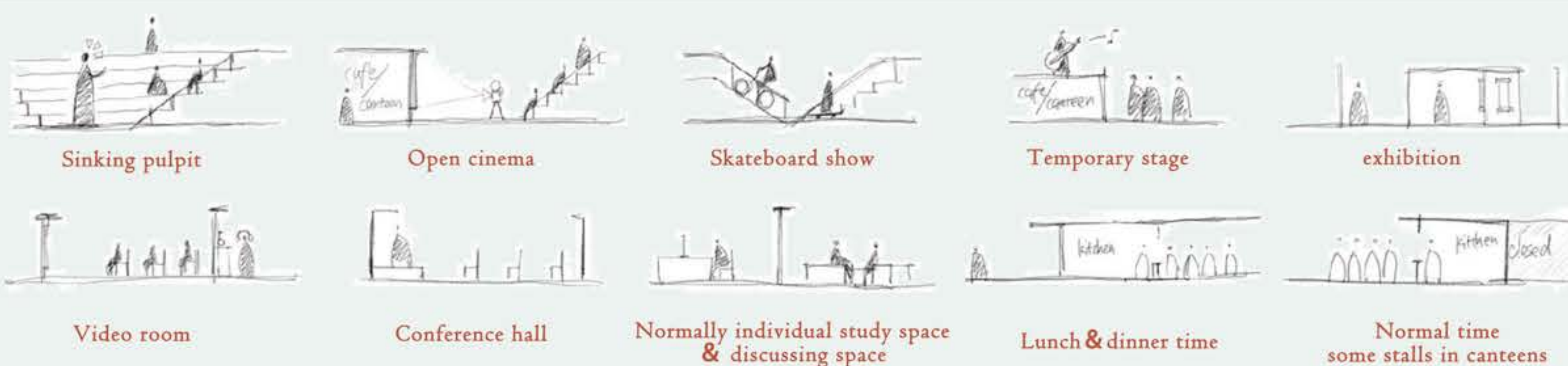
**Functional zoning map**  
Pay attention to how we see our buildings from the outside street

### Analysis –site scale



a large volume in the center of the inter section divides the community.  
Each community has a limited number of users.

### Analysis –activity



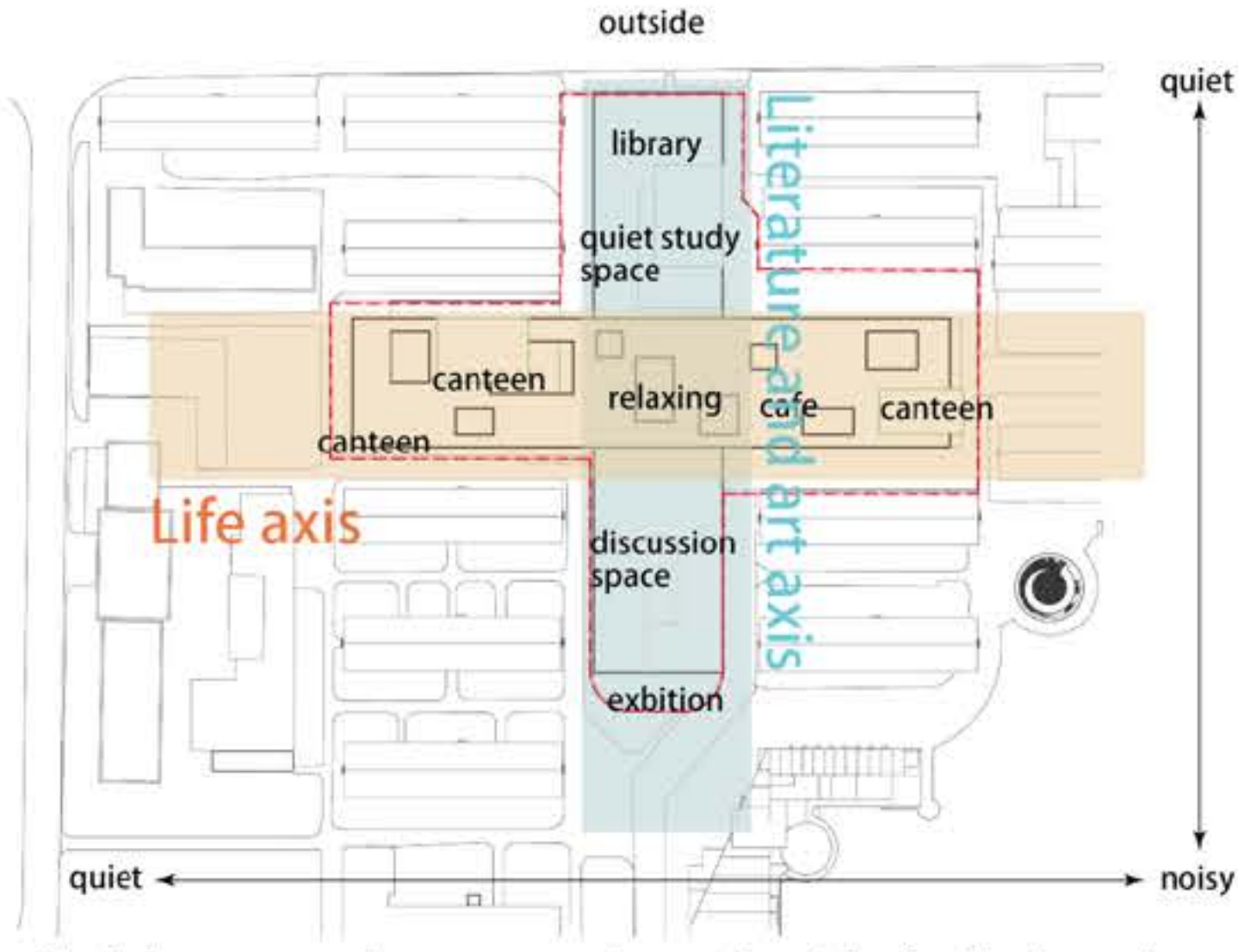


# "knot" Group4

## Internation Workshop 2022

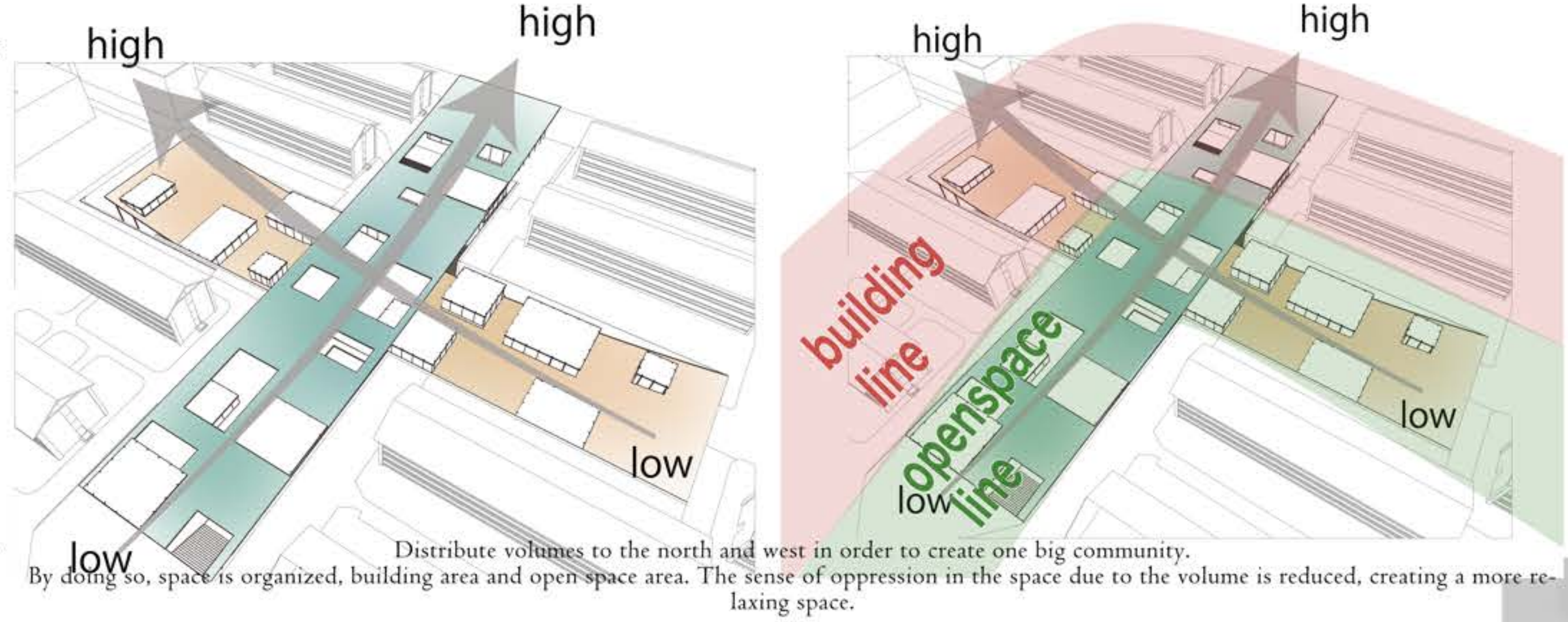
The current facilities on campus cannot meet the daily activities and display needs of various clubs on campus, and at the same time, the campus can provide insufficient entertainment and cultural activities for other students. By providing open activities and exhibition spaces for clubs with display needs, a variety of activities can be joined in the activity area of the media coffee, thereby attracting students who pass through the cafeteria to stay, participate in activities, and get spiritual relaxation. Public space that can not only let students share their activities but also not be

### Strategies to goals----concept



Goals is open space that encourage interaction with other borders and people from different cultures.

Strategy is to connect east-west and north-south with two axes.  
Establish Life axis, literature and arts axis



### Masterplan (1:400)





# "knot" Group4

## Internation Workshop 2022

The current facilities on campus cannot meet the daily activities and display needs of various clubs on campus, and at the same time, the campus can provide insufficient entertainment and cultural activities for other students. By providing open activities and exhibition spaces for clubs with display needs, a variety of activities can be joined in the activity area of the media coffee, thereby attracting students who pass through the cafeteria to stay, participate in activities, and get spiritual relaxation. Public space that can not only let students share their activities but also not be

Plan(I:400)

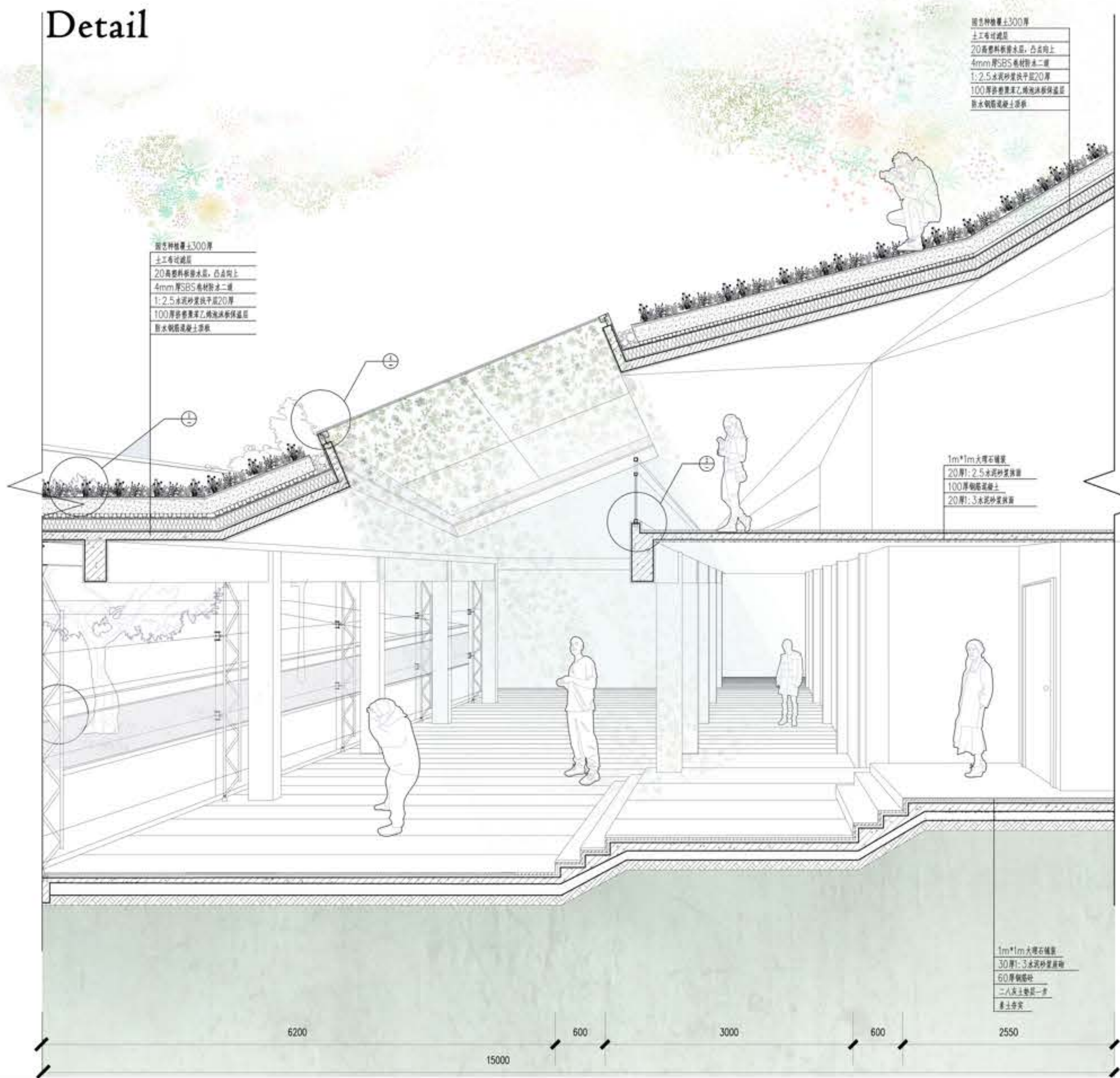




# International Workshop 2022

The current facilities on campus cannot meet the daily activities and display needs of various clubs on campus, and at the same time, they can also provide insufficient entertainment and cultural activities for other students. By providing open activities and exhibition spaces for clubs with display needs, a variety of activities can be joined in the activity area of the media coffee, thereby attracting students who pass through the cafe to stay, participate in activities, and get spiritual relaxation. Public space that can not only let students share their activities but also not be

## Detail



Section



## Facade

